



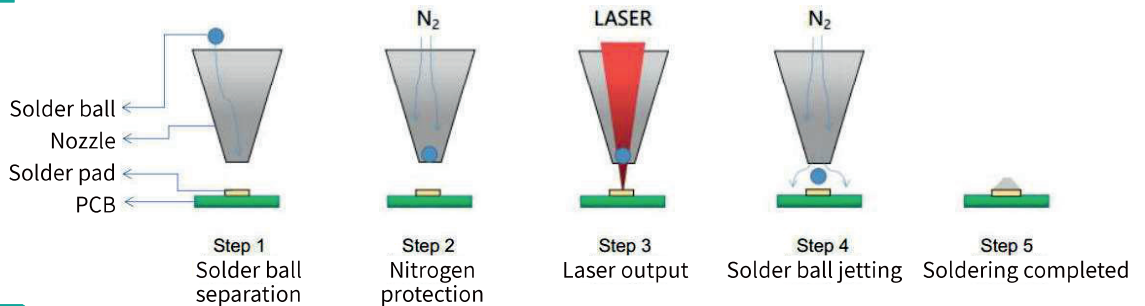
Laser Soldering

/// Laser Solder Jetting

Using a multi-axis intelligent motion controlled platform with high-precision CCD positioning, height detection and soldering points inspection etc.

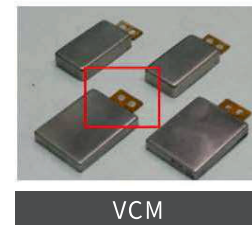
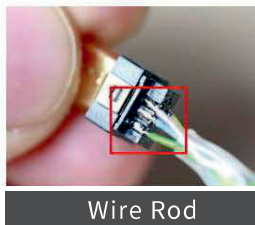
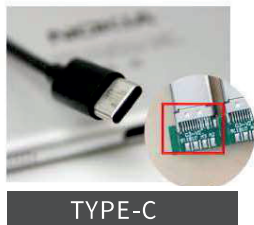
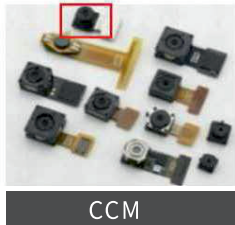
User-friendly interaction and fool-proofing design, easy and safe for operation.

Process



Application

- Offline Machine: Products pre-fixation, products loaded and unloaded manually, dual platforms for high efficiency production. Optional auxiliary modules like electric flip fixtures etc. are available.
- Inline Machine: Inline production, products loaded and unloaded automatically in the production line. Optional configurations like auxiliary preheating and multi-station etc. are available.



Specifications

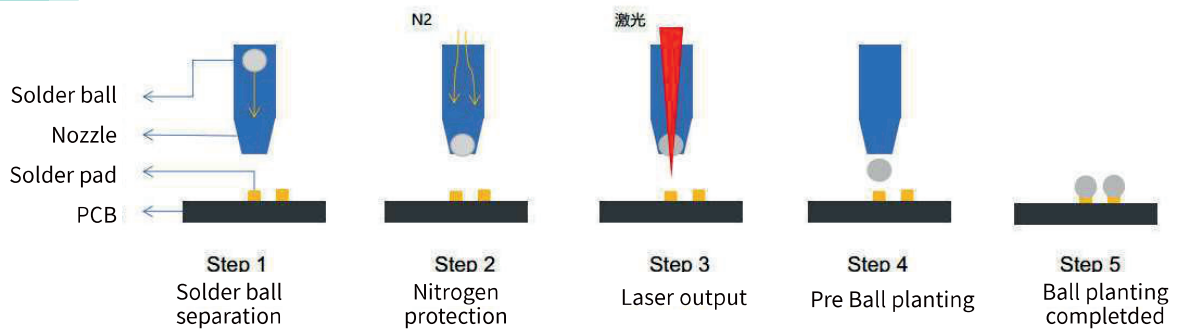
Model		LB100	LB100S
Machine	Power Supply	220V 50Hz/60Hz	
	Air Supply	0.5Mpa	
	Max Power	2500W	
	Dimension	1200*1500*1750mm	900*1310*1750mm
	Soldering Area	X:700 Y:800 Z:100(mm)	X:400 Y:800 Z:100(mm)
	Weight	965kg	625Kg
Vision	Positioning Mode	Visual guided positioning	
	Camera	5 mega pixels	
Speed Range	X/Y/Z	0.1~800 mm/sec	
Repeat Accuracy	X/Y/Z Axis	±0.01mm	
Height Detection	Accuracy	8um	
Laser	Power	75W/100W/150W/300W	

/// Laser Ball Planting



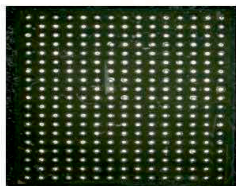
Can be used for chip ball planting, chip reseeding and chip rework etc. One-stop or multi-stop automation solutions are available. LSJ100S brings a new solution to the semi-conductor industry. When the laser is transmitted through optical fiber, its high energy can melt the solder balls inside the nozzle instantly. With the high nitrogen pressure, the solder will be sprayed onto the solder points for automatically soldering. Real-time closed loop control.

Process

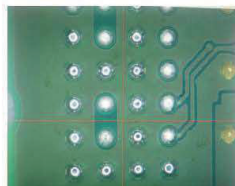


Application

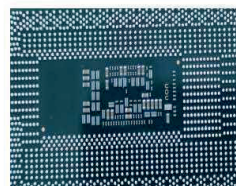
Products pre-fixation, products loaded and unloaded manually, dual platforms for high efficiency production. Optional configurations like preheating and flux dispensing etc. are available.



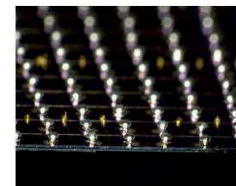
5G Communication Semiconductor



Automotive Chip



Internet/CPU



Microwave Communication

Specifications

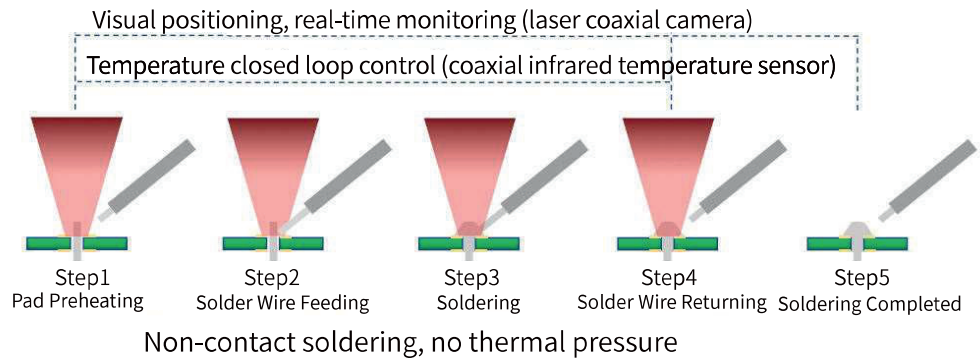
Model		LSJ100S
Machine	Power Supply	220V 50Hz/60Hz
	Air Supply	0.5Mpa
	Max Power	2500W
	Dimension	900*1310*1750mm
	Soldering Area	X:400 Y:800 Z:100(mm)
	Weight	625Kg
Vision	Positioning Mode	Visual guided positioning
	Camera	5 mega pixels
Speed Range	X/Y/Z	0.1~800 mm/sec
Repeat Accuracy	X/Y/Z Axis	±0.01mm
Detection Height	Accuracy	8um
Laser	Power	75W/100W/150W

/// Laser Solder Wire Soldering

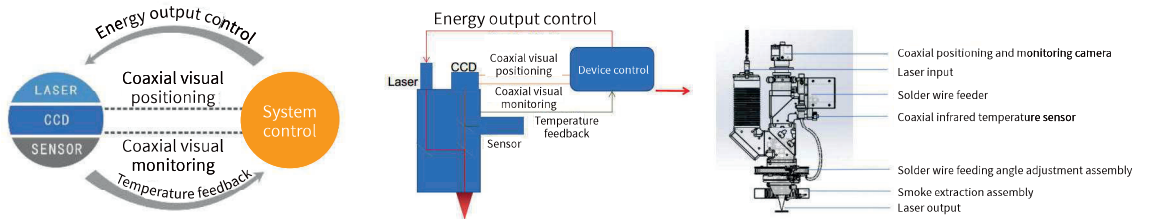
Automatic solder wire feeding, using laser as heating source.

Three-point coaxial control of vision, temperature closed-loop control and laser optical path, easy and high efficient for visual positioning.

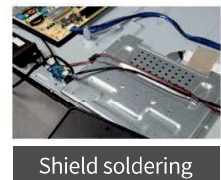
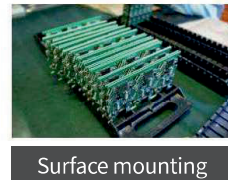
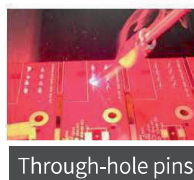
Process



Coaxial 3-Point



Application



Specifications

Model		LW100	LW100S
Machine	Power Supply	220V 50Hz/60Hz	
	Air Supply	0.5Mpa	
	Max Power	2000W	
	Dimension	1200*1500*1750(mm)	900*1310*1750mm
	Soldering Area	X:700 Y:500 Z:100(mm)	X:400 Y:500 Z:100(mm)
	Weight	935kg	600kg
Vision	Positioning Mode	Visual guided positioning	
	Camera	5 mega pixels	
Laser	Power	100W/200W	
Wire Feeding	Solder Wire Diameter	0.2~1.2mm	
	Feeding Angle	90°	
	Solder Wire Breaking Module	0.5~1.2mm	
	Solder Wire Break Alarm	Yes	

/// Laser Solder Paste Soldering

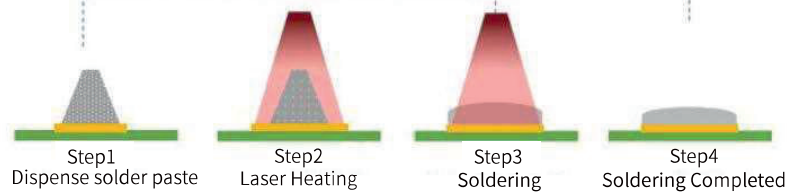
Multi-axis servo motor module, real-time temperature feedback system, CCD coaxial positioning and semiconductor laser device.

Self-developed soldering software, temperature closed-loop control, high-speed and precise control of constant laser soldering.

Can be used for a wide variety of applications and inline production.

Process

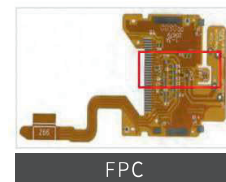
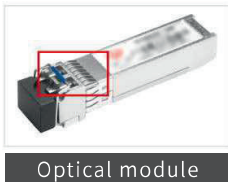
Visual positioning, real-time monitoring (laser coaxial camera)
Temperature closed loop control (coaxial infrared temperature sensor)



Non-contact soldering, no thermal pressure

Application

- Offline Machine: Products pre-fixation, products loaded and unloaded manually, dual platforms for high efficiency production. Optional auxiliary modules like electric flip fixtures etc. are available.
- Inline Machine: Inline production, products loaded and unloaded automatically in the production line. Optional configurations like auxiliary preheating and multi-station etc. are available.



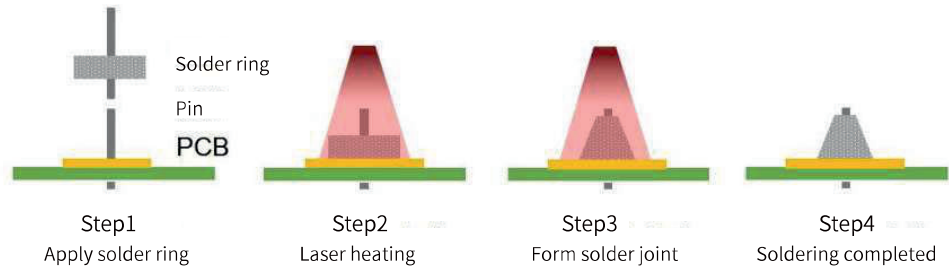
Specifications

Model		LP100	LP100S
Machine	Power Supply	220V 50Hz/60Hz	
	Air Supply	0.5Mpa	
	Max Power	2500W	
	Dimension	1200*1500*1750mm	900*1310*1750mm
	Soldering Area	X:700 Y:800 Z:100	X:400 Y:800 Z:100
	Weight	950kg	600kg
Vision	Positioning Mode	Visual guided positioning	
	Camera	5 mega pixels	
Temperature	Temperature Range	100-600°C	
Fume Extracting	Fume Extraction Flow Rate	100m ³ /h	
	Filtering Efficiency	0.3um,99.97%	
Laser	Power	100W/200W	
Solder Paste (Syringe)	Dispensing Mode	Manual mode / automatic mode	
	Suction Air Range	0~-20Kpa	
	Discharge Pressure	4-digit	
	Discharge Time	4-digit	

/// Laser Solder Ring Soldering

Automatic solder ring shaping module, solder ring with 1-5 circles at any angle.
 Constant soldering module, multi-axis servo motor module, real-time temperature feedback system, CCD coaxial positioning and semiconductor laser device.
 High-speed infrared sensor to detect and feedback the real temperature, precise control temperature profile.

Process



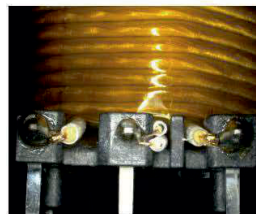
Non-contact soldering, no thermal pressure

Application

Products pre-fixation, products loaded and unloaded manually, dual platforms for high efficiency production. Optional configurations like electric flip fixtures and preheating are available.



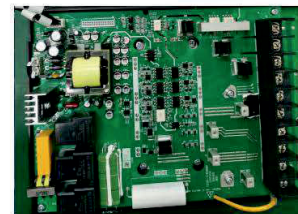
Sensor



Wireless charging coil



Motor



Switching power supply

Specifications

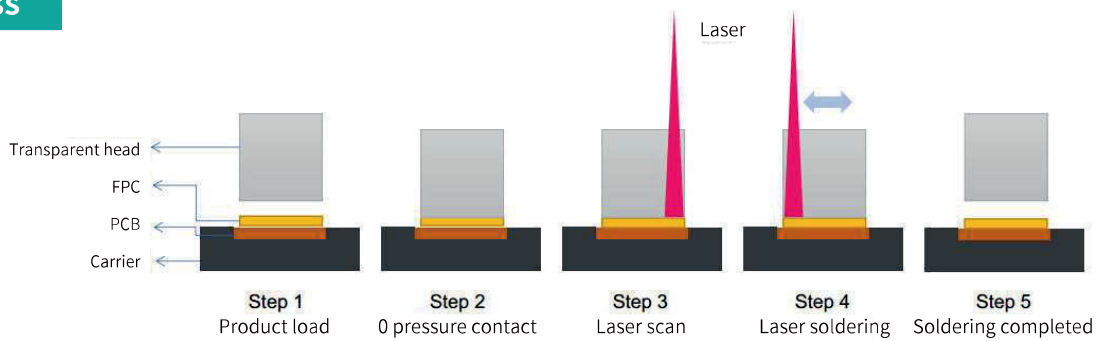
Model		LR100	LR100S
Machine	Power Supply	220V 50Hz/60Hz	
	Air Supply	0.5Mpa	
	Max Power	2500W	
	Dimension	1200*1500*1850mm	1000*1310*1750mm
	Soldering Area	X:700 Y:900 Z:100mm	X:500 Y:800 Z:100mm
	Weight	980kg	650kg
Speed Range	X/Y/Z	0.1~800 mm/sec	
Repeat Accuracy	X/Y Axis	±0.01mm	
	Z Axis	±0.01mm	
Laser	Power	100W/200W	
Solder Wire Ring	Rotatable Circles	1-5 Turns	
	Ring Inner Diameter	0.3-2.0mm	
	Solder Wire Diameter	0.2-1.0mm	

/// Laser Hot Bar Soldering



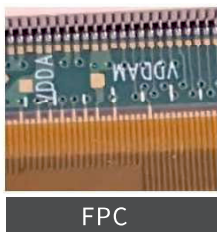
Multi-axis servo motor module, temperature closed-loop control, CCD coaxial positioning and semiconductor laser device.
 Self-developed soldering software, multi formats of files can be imported, real-time monitoring of soldering process.
 High-speed and precise control of constant laser soldering.
 Can be used for a wide variety of applications and inline production.

Process

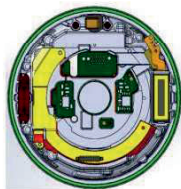


Application

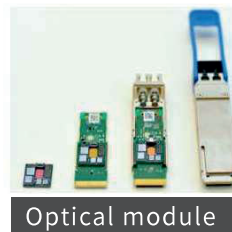
Products preassembled, products loaded and unloaded manually, dual platforms for high efficiency production. Optional configurations like automatic pressing fixtures and high-precision self-closed loop module etc. are available.



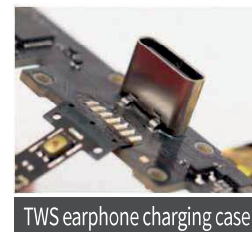
FPC



Smart watch



Optical module



TWS earphone charging case

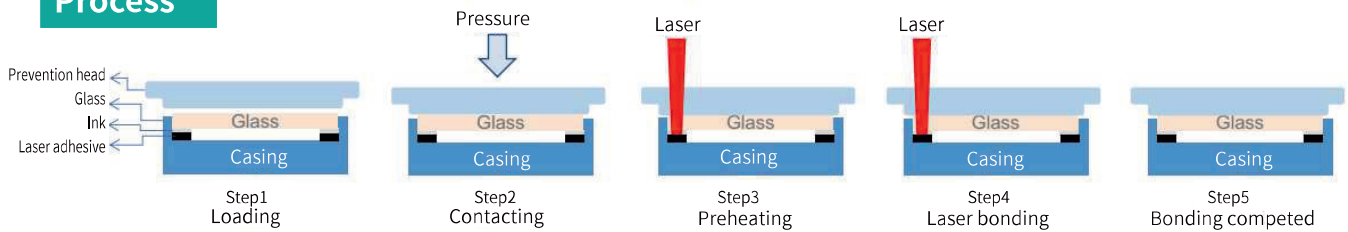
Specifications

Model		LH100	LH100S
Machine	Power Supply	220V 50Hz/60Hz	
	Air Supply	0.5Mpa	
	Max Power	2500W	
	Dimension	1200*1500*1750mm	900*1310*1750mm
	Soldering Area	X:700 Y:500 Z:100mm	X:400 Y:500 Z:100mm
	Weight	750kg	600kg
Speed Range	X/Y/Z	0.1~800 mm/sec	
Repeat Accuracy	X/Y Axis	±0.01mm	
	Z Axis	±0.01mm	
Laser	Power	100W/200W	

/// Laser Adhesive Bonding

Using laser beam as heating source, activating specific adhesive to bond two or more components together in production of electronic products.

Process



Application

Products preassembled, products loaded and unloaded manually, dual platforms for high efficiency production. Optional configurations like automatic pressing fixtures and high-precision self-closed loop module etc. are available.



Watch



Wristband



Smartphone

Specifications

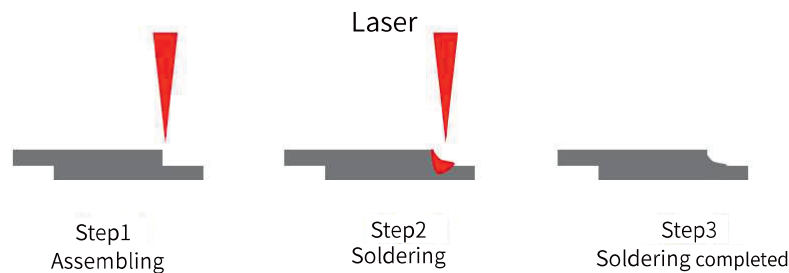
Model		LG100
Machine	Power Supply	220V 50Hz/60Hz
	Air Supply	0.5Mpa
	Max Power	2500W
	Dimension	1200*1500*1750mm
	Soldering Area	X:700 Y:500 Z:100mm
	Weight	750kg
Speed Range	X/Y/Z	0.1~800mm/sec
Repeat Accuracy	X/Y/Z Axis	±0.02mm
Laser	Power	30W

/// Laser Metal Soldering

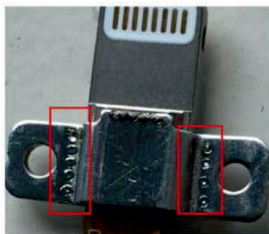


Using high energy and density laser beam as heating source for precise soldering.
 Multi-axis intelligent motion control galvanometer soldering platform, high-precision CCD positioning module.
 User-friendly interaction and fool-proofing design, easy and safe for operation.

Process



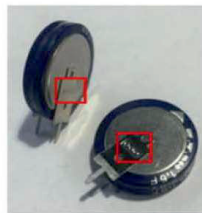
Application



Apple cable joint



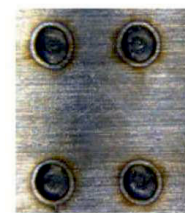
USB-C cable joint



Button cell electrode plate



Pressure sensor



Stainless steel sheet

Specifications

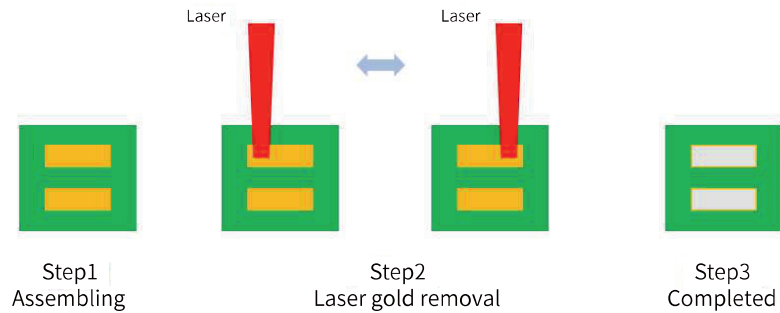
Model		LSW100	LSW100S
Machine	Power Supply	220V 50Hz/60Hz	
	Air Supply	0.5Mpa	
	Max Power	2500W	
	Dimension	1200*1500*1750mm	900*1310*1750mm
	Soldering Area	X:700 Y:500 Z:100mm	X:400 Y:500 Z:100mm
	Weight	750kg	600kg
Speed Range	X/Y/Z	0.1~800mm/sec	
Repeat Accuracy	X/Y/Z Axis	±0.01mm	
Laser	Power	100W/200W	

/// Laser Gold Removal

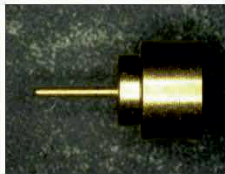
Using fiber optic to output the laser passing through a high-speed galvanometer scanning system, irradiating the surface of the gold layer.

High efficiency in electro-optical conversion, high quality laser beam, high reliability, compact machine.

Process



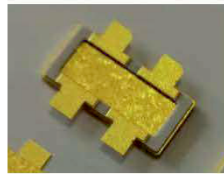
Application



Lead



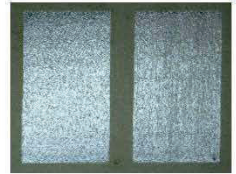
Aerospace device



Radar module



High frequency connector



PCB plated with gold

Specifications

Model		LSG100 (Customized)
Machine	Power Supply	220V 50Hz/60Hz
	Air Supply	0.5Mpa
	Max Power	2500W
	Scanning module Moving Range	X:200 Y:200 Z:200(mm)
	Weight	750kg
Vision	Positioning Mode	Visual guided positioning
	Camera	5 mega pixel
Speed Range	X/Y/Z	0.1~800 mm/sec
Repeat Accuracy	X/Y/Z Axis	±0.01mm
Laser	Power	75/100

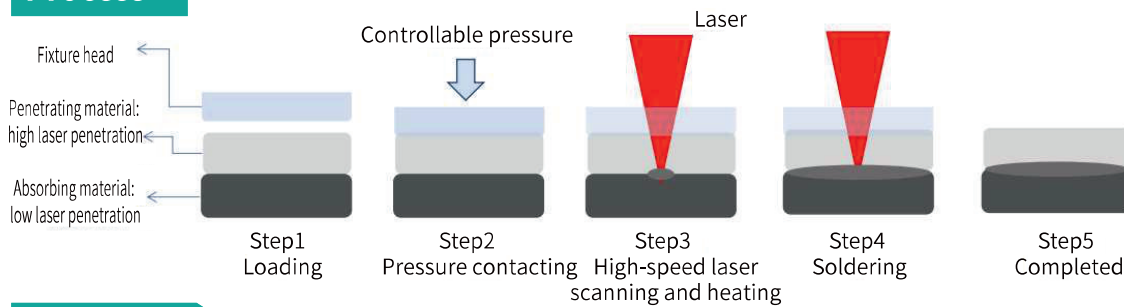
/// Laser Plastic Soldering

Using laser beam as heating source to melt and solder the contact surface of plastic in the same or different materials.

Self-developed soldering software, multi formats of files can be imported, real-time monitoring of the soldering process, high-precision control of the laser soldering.

Can be used for a wide variety of applications and inline production.

Process

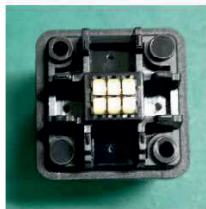


Application

Products pre-fixation, products loaded and unloaded manually, dual platforms for high efficiency production. Optional auxiliary modules like electric flip fixtures etc. are available.



TWS earphone



On-board camera



On-board radar

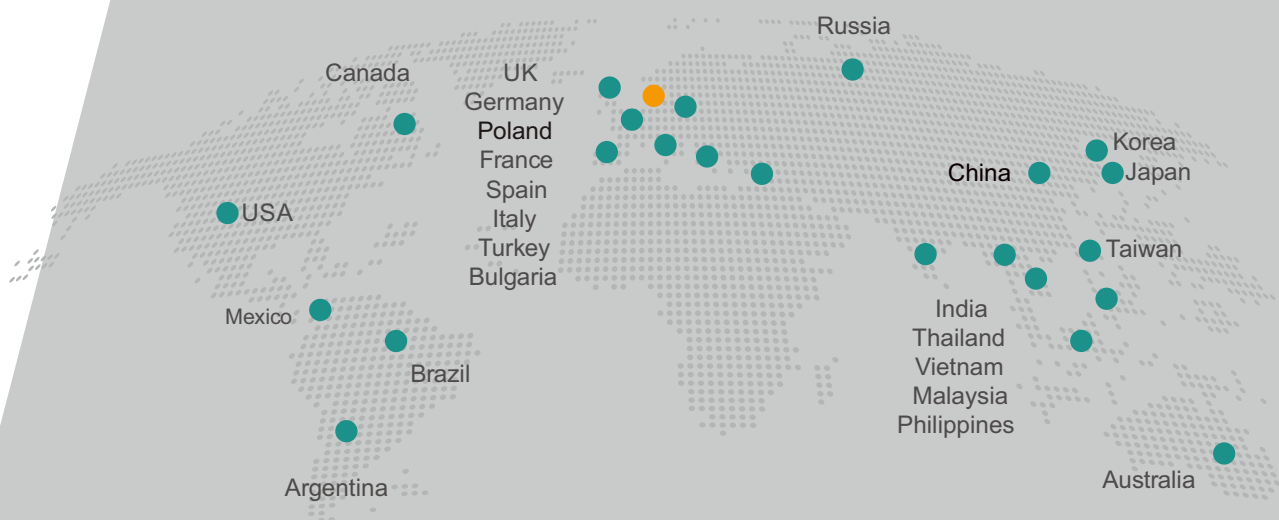


Electronic cigarette

Specifications

Model		LPW100	LPW100S
Machine	Power Supply	220V 50Hz/60Hz	
	Air Supply	0-0.5Mpa	
	Max Power	2000W	
	Dimension	1200*1500*1750(mm)	900*1310*1750mm
	Soldering Area	X:600 Y:500 Z:100(mm)	X:400 Y:500 Z:100(mm)
	Weight	750kg	600kg
Vision	Positioning Mode	Visual guided positioning	
	Camera	5 mega pixels	
Temperature	Temperature Range	100-600°C	
Laser	Power	30W/200W	

Global Services



QUICK INTELLIGENT EQUIPMENT

contact@quick-global.pl www.quick-global.eu

BIALL Sp. z o.o. Barniewicka 54c PL 80-299 Gdańsk, Poland